

**NANJING PERLOVE MEDICAL EQUIPMENT CO.,LTD.**

Add: No.168 Kaiyuan Road, Jiangning District, Nanjing, 211100, China  
Tel: +86-25-87187780 +86-25-68571666-9350 9353  
Fax: +86-25-87187780  
Http://www.perlove.com.cn  
E-mail: overseas@perlove.com.cn



**OUR UPCOMING EXHIBITIONS:**

You can see more details on our website  
Http://www.perlove.com.cn



**PERLOVE MEDICAL**

**For Overseas Market:** Nanjing Perlove Medical Equipment Co.,Ltd.

**For Domestic Market:** Nanjing Perlove Medical Equipment Co.,Ltd.

Beijing Per-Builders Science and Technology Co.,Ltd.

Zhuhai Perlead Medical Equipment Co.,Ltd.

# PLX7100A

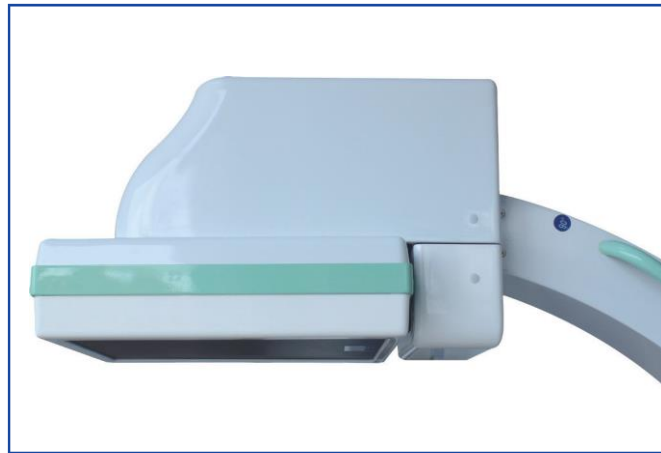
HF Mobile Digital C-arm System (Flat Panel Detector)

Version 1.0 Year 2017

Http://www.perlove.com.cn



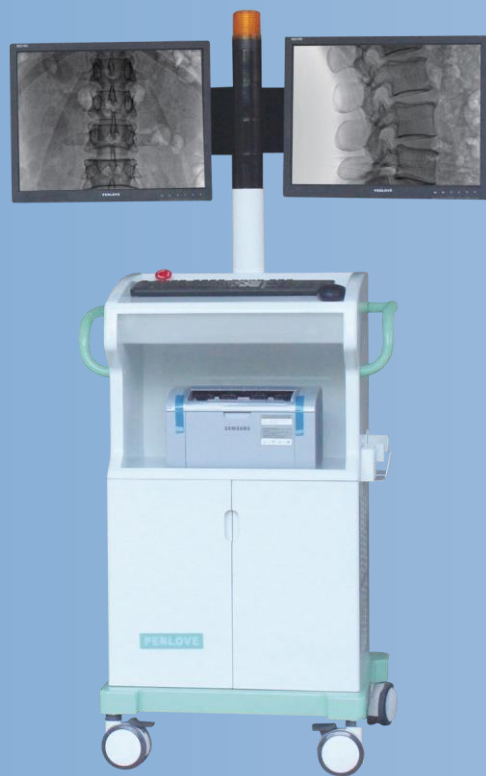
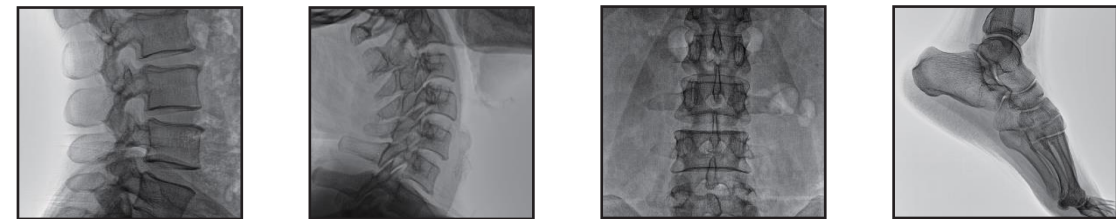
## Advanced digital imaging technology, Sharp image



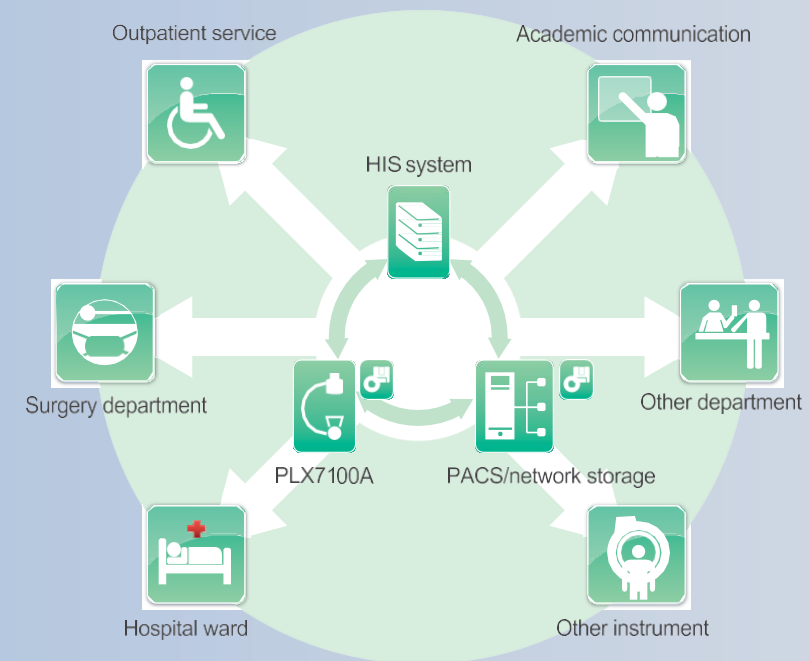
- Full view FPD, outstanding image quality and large field of view coverage even during image rotation.
- High dynamic field of view, achieve the optimal image of human body's soft tissue and skeletal tissue.
- A-si detector with CSi screen, excellent spatial resolution.

• Perfect digital imaging chain makes the routine operation easily as follow:

- Orthopedics department
- Spine surgery
- General surgery
- Pain surgery
- Orthopedic surgery
- Gastroenterology department
- Traumatology department
- Gynecology
- Urinary surgery

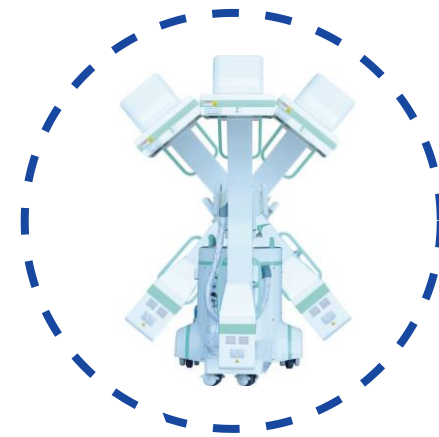


- Perfect image processing system with extraordinary function ensures what you get.
- Built-in advanced image automatic optimum processing and enhancing module realize the sharp clinical image.
- Based on the Laplacian pyramid algorithm to achieve image contrast enhancement and in-time tissue equalization.
- Professional working station has more image post-processing function such as the image W/L adjustment, region of interest balance, GAMMA correction, flip, noise reduction, smoothing, sharpening etc.
- Professional high-definition LCD medical display system presents you the ideal clinic images.

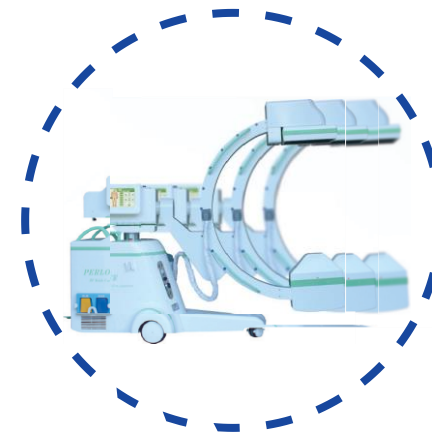


- A high performance imaging workstation and image processing system serves you a convenient interface for integration with network.
- Work-list registration for seamless integration in your hospital environment.
- Dicom 3.0 network interface for integration with PACS or RIS.
- CD burning for easy image transfer.
- Multi-storage methods for easy image transfer.

- C-arm widely vertical movement range meets various height demand of operation table.
- Longer orbit sliding range brings you more visible area.
- C-arm back and forward movement can make non-central parts be covered easier.
- SID can be adjusted by detector movement to expand exposure area, bring you outstanding image and more operation space.

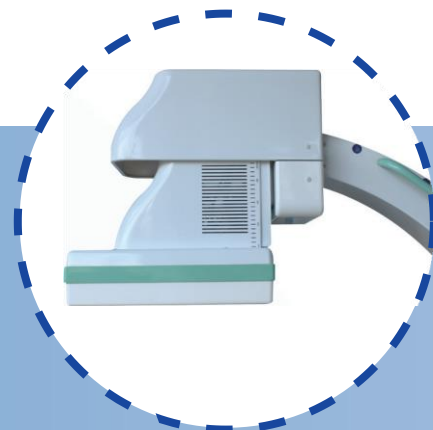


Motorized horizontal rotate

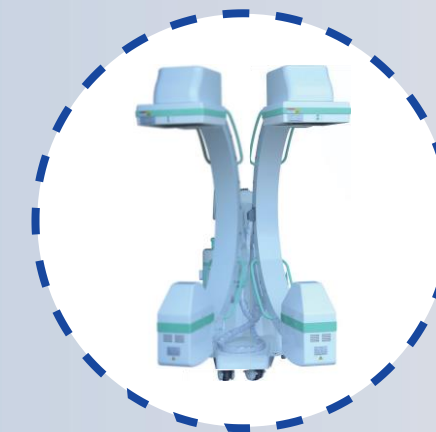


Motorized horizontal stretch

- Simultaneous movement in 5 axes
- Rapid motorized control, meet accurate position demands



Flat panel detector up and down



Horizontal swinging



Motorized up and down



## Advanced digital imaging technology, Sharp image



Double rotatable flat-screen monitors on the trolley, clearly visualize the smallest anatomical details even at an angle.

Human graphical LCD touch screen with accurate APR parameters setting realizes convenient operation.



Hand controller on C-arm stand: control the mechanical and collimator movement, improve your workflow even you are away from the unit.

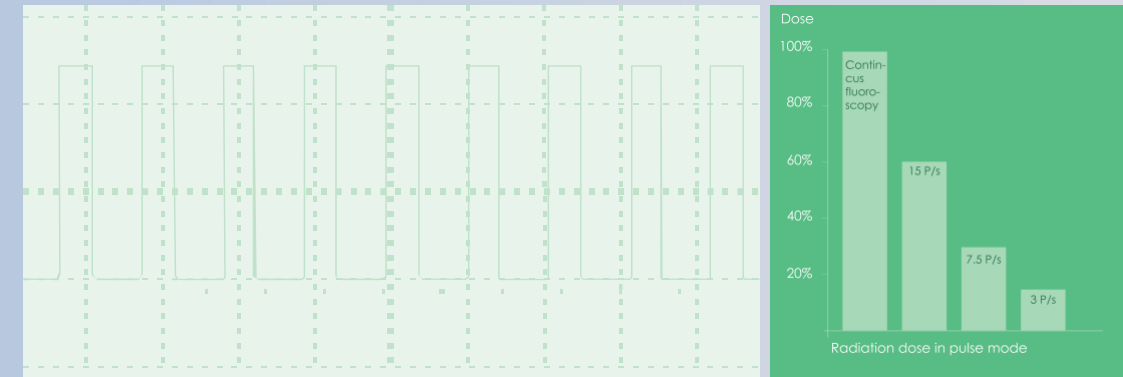
Hand-held and panel dual-control system, control mechanical movement from long distance or at your hand all the time.



Multi-functional foot switch for hand free direction access to fluoroscopy and radiography, convenient for close table and compartment operation.

## Intelligent digital pulse, Low dose, High quality

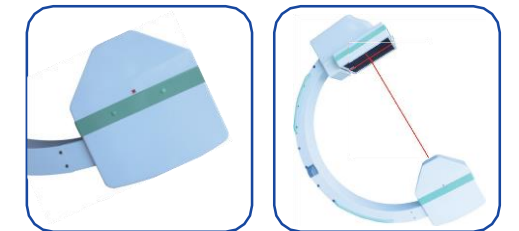
Digital pulse dose intelligent control technology meet EU requirements of medical equipment. Real time, continuous pulse fluoroscopy technology, multiple frequency adjustment, instantaneous high tube current output assures the high quality image and low dose.



### Digital pulse dose intelligent control technology

1. High-frequency generator deliver the power you need for all the typical applications in spine surgery, orthopedics, traumatology, urology and pain management.
2. Unique design of large thermal capacity(>1000kJ) with advanced heat dissipation technology, allows for clear images, even for long or repeated procedures.
3. Motorized iris collimator help achieve outstanding and optimized dose.
4. Advanced digital working station with versatile image post-processing functions.

Item	PLX7100A
Power Output	25kW
Inverter Frequency	60kHz
Continuous Fluoroscopy Mode(manual & automatic)	Tube Voltage: 40kV ~ 125kV
	Tube Current: 0.3mA ~ 5mA
Enhance Fluoroscopy	Tube Voltage: 40kV ~ 125kV
	Tube Current: 0.3mA ~ 10mA
Pulse Fluoroscopy Photography Mode	Tube Voltage: 40kV ~ 125kV
	Tube Current: 0.3mA ~ 100mA
	Tube Voltage: 40kV ~ 125kV
	Tube Current: 70 ~ 200mA



Crosshair overlay corresponding with laser light, designed for easily checkpoint location before operation, avoiding unnecessary exposure.